

Printing in MapInfo Professional® v7.0

THE USE OF MAPINFO PROFESSIONAL® V7.0 PRINT OPTIONS ARE BASED ON A PRINT-BY-PRINT BASIS. ONCE YOU HAVE ENSURED PROPER INSTALLATION OF THE PRINT/PLOTTER AND ITS DRIVERS AND CONNECTION TO THE COMPUTER AND THAT THERE IS SUFFICIENT MEMORY TO PRINT, YOU ARE READY TO BEGIN.

Before beginning to print maps or graphs in *MapInfo Professional*® v7.0, you may want to create a new layout to arrange your graphs, maps, legends, titles, etc., for the best effect.

Choose Windows > New Layout Window to put together a more effective presentation.

To print a map or a graph from *MapInfo Professional v7.0*, follow these steps.

1. When your map or layout is set, choose File > Print to display the Print dialog box. (figure 1)
2. Select the printer or plotter you want to use from the dropdown list.
3. Select the print range to be printed and the number of copies.
4. Set further print options by clicking the Options button.
5. On the Map Print Options dialog, there are selections. (figure 2)
 - *Select your map size.* As you do, the Custom Scale, Custom Width and Custom Height entries will change. Sizes include: window size, which prints the map as it is displayed on your computer screen; fit to page, which prints the current map to the page size you selected in your preferences; and, custom, to enter your own custom scale, width and height.
 - *Select your map contents.* You determine the map contents to be printed. The same as window option prints the map contents as it appears in the Map window—the same proportions and content that you see. The centered on window button centers as much of the current map that fits on the page. With the centered on window option, the image may print on more than one page, depending on fit. Generally, *MapInfo Professional* understands that you want to select the Fit to Page size option when contents are to be centered on window. Therefore, the Fit to Page button will be selected for you.

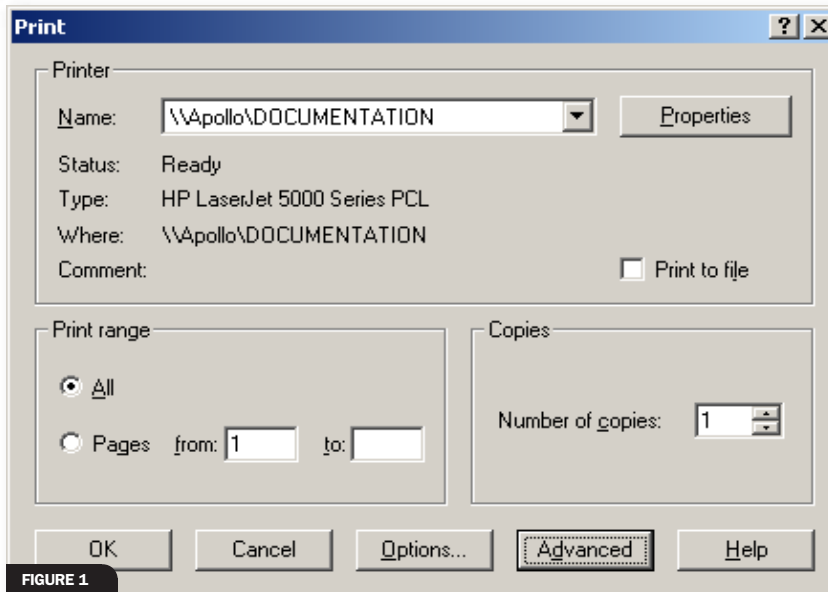


FIGURE 1

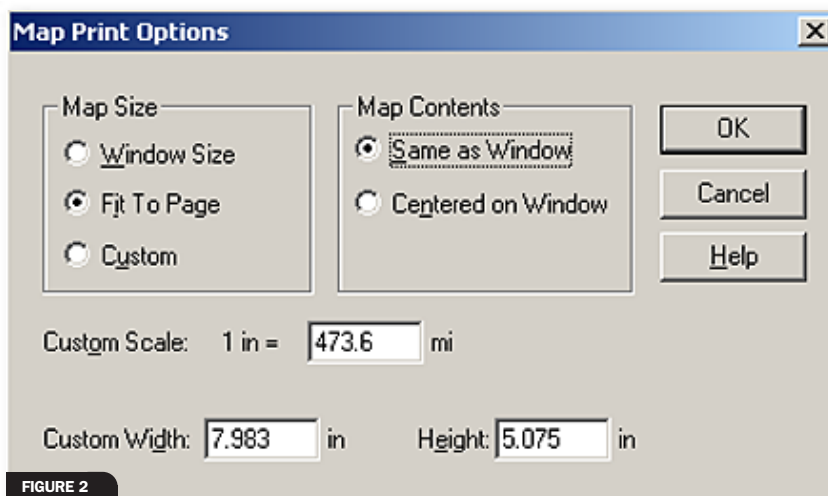


FIGURE 2

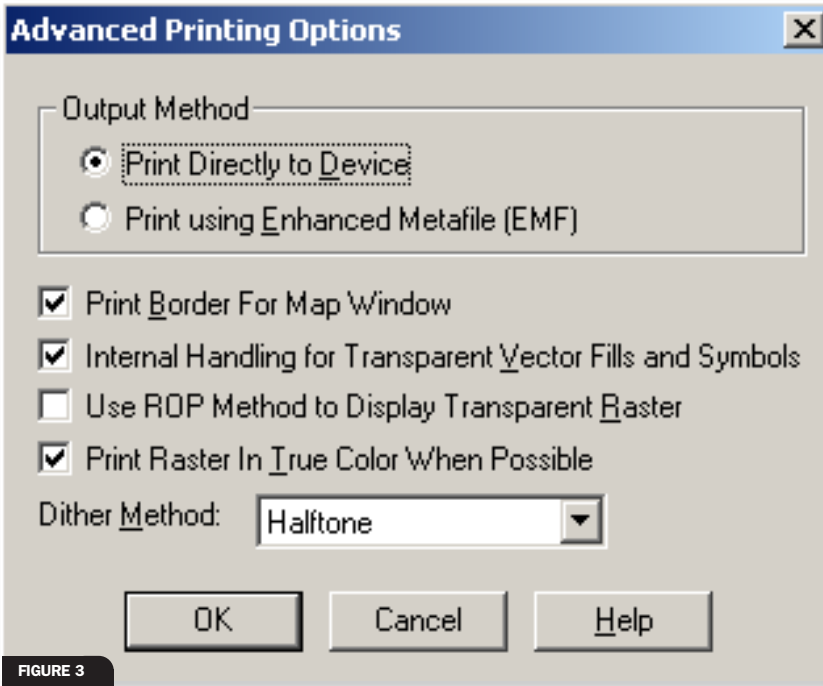


FIGURE 3

6. To set advanced print options, click Advanced. (figure 3)

7. Select the appropriate options and click OK to return to the Print dialog box. By selecting the options for this current print session, you are overriding the preferences you have set.

- There are two output methods. Print Directly to Device is the default setting and allows you to print your image file directly from *MapInfo Professional*. Print Using Enhanced Metafile enables you to generate an enhanced metafile of your *MapInfo Professional* image before sending it to print. Print Using Enhanced Metafile takes advantage of the current technology to shrink the spool size and print your file quicker without sacrificing quality.

MAPINFO PROFESSIONAL® UPDATE ADDRESSES KEY FUNCTIONALITY

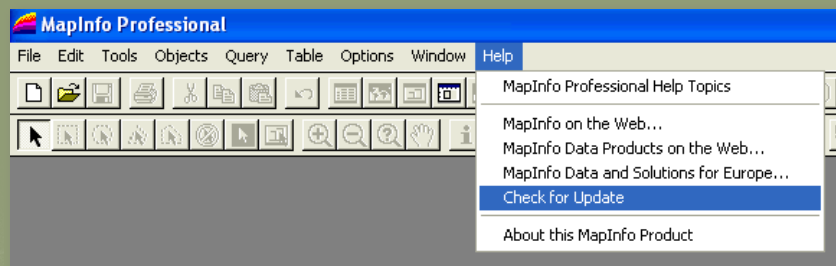
Please be sure to download the latest update for *MapInfo Professional® v7.0*. The *MapInfo Professional* update addresses several key functional areas.

- Raster image display and control
- Querying
- Object processing
- Crystal reports
- Table structures and metadata
- Arc objects
- MapInfo MapBasic® save window statement

Users can access the update by going to www.mapinfo.com/smartupdate/index.cfm?action=updateForm or by selecting "Check for Update" under the *MapInfo Professional* Help menu.

Fully detailed information is available on updated features via the update download site.

The v7.0 upgrade is easily applied to all 18 languages (English plus 17 localized versions) in which *MapInfo Professional* is available.

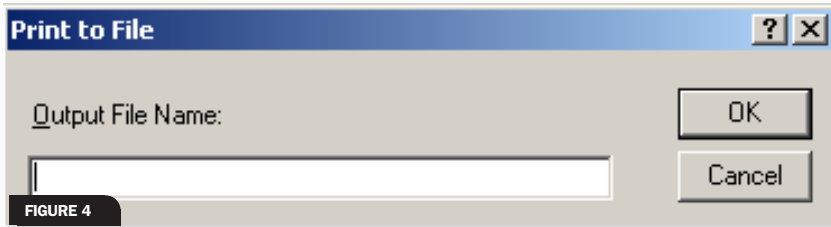


In addition, demos on *MapInfo Professional* are available at www.mapinfo.com/miproducts/Overview.cfm?productid=1044. These are multimedia presentations, running approximately five minutes each, that demonstrate the functionality *MapInfo Professional* provides to customers.

MapInfo Professional v5.0-v7.0 users can easily see the functionalities that have been added by going to http://www.mapinfo.com/products/mipro/comparison_chart.pdf.

More information on *MapInfo Professional* can be accessed at www.mipro.com.

Under *MapInfo Professional*'s Help menu, click Check for Update to access information.



- Print Border for Map Window prints a black border around your image. The border is the default setting. Clear the check box if you want to print the image with no border.
 - Internal Handling for Printing Transparent Vector Fills and Symbols handles transparent fill patterns and bitmaps for vector images when printing. This is checked by default. Unclear the check box to allow the printer to manage this work.
 - Use ROP Method to Display Transparent Raster allows the internal ROP (raster overlay by pixel) to manage the transparent pixels when printing raster images. Since the ROP method is largely a display method, not all printers can use it.
 - Print/Export Raster in True Color When Possible is the default to print your 24-bit raster or grid file images in true color. Make sure your printer settings are set to greater than 256 colors. If you are not working with a color print, clear this check box.
8. When you have completed these selections, click OK to begin printing.

Note: If you selected the Save Printer Information to Workspaces button in the Startup preferences, *MapInfo Professional* saves the printer information and settings to the workspace.

To set this preference, choose Options > Preferences > Startup.

Printing to a File

You can print the current data or map information into a file for importing into a presentation or other medium. Do this by printing to a file or exporting the current workspace or table.

1. Choose File > Print to display the Print dialog box.
2. Set your printer options as you need them.
3. Select the Print to File check box.
4. Click OK to access the Print to File box dialog. (figure 4)
5. Type the file name you are creating and click OK.

A comprehensive review addresses potential printing issues *MapInfo Professional* users may experience or need to understand. The document, Handling Printing Issues in *MapInfo Professional v7.0* is available via the MapInfo Tech Support Knowledge Base at www.mapinfo.com/kbase_by_product. ★

Nancy Lindsay is a technical writer with MapInfo Corporation.